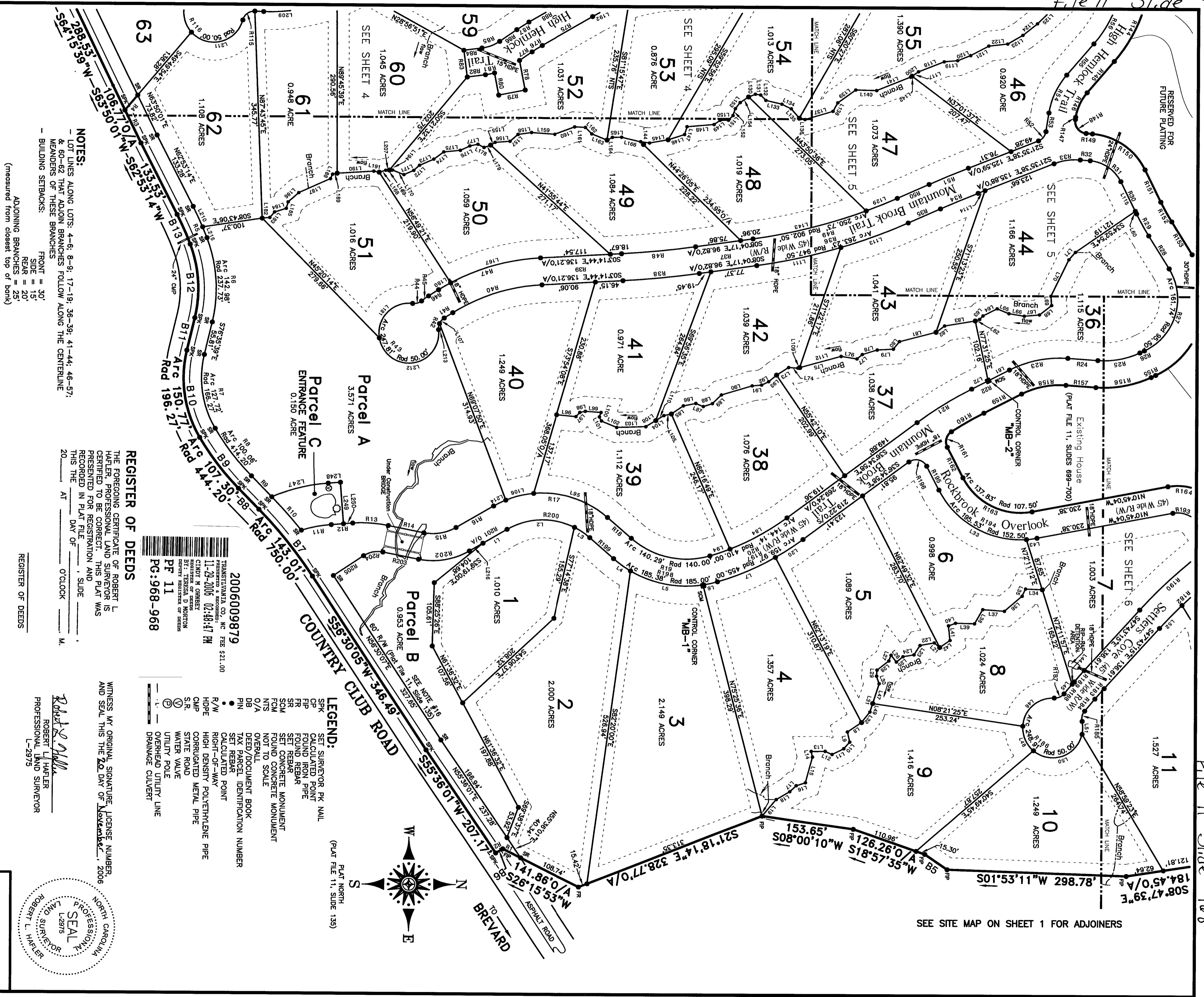


File 11 Slide 968

File 11 Slide 968

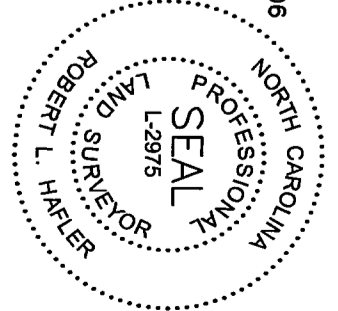
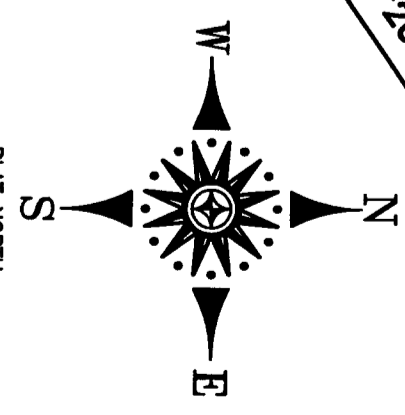


NOTES:
 - LOT LINES ALONG LOTS: 4-6; 8-9; 17-19; 36-39; 41-44; 46-57;
 & 60-62 THAT ADJOIN BRANCHES FOLLOW ALONG THE CENTERLINE
 MEASUREMENTS OF THESE BRANCHES
 - BUILDING SETBACKS:
 FRONT = 30'
 SIDE = 15'
 REAR = 20'
 ADJOINING BRANCHES = 25'
 (measured from closest top of bank)

REGISTER OF DEEDS
 THE FOREGOING CERTIFICATE OF ROBERT L. HAFLER, PROFESSIONAL LAND SURVEYOR IS CERTIFIED TO BE CORRECT. THIS PLAT WAS PREPARED FOR REGISTRATION AND RECORDED IN PLAT FILE 11, SLIDE 968 THIS _____ DAY OF _____, 20____ AT _____ O'CLOCK _____ M.

2006009879
 TRANSPORTATION CO. INC. FEE \$21.00
 11-29-2006 02:48:47 PM
 CLINDY H. GIMBEY
 BY: TERESA D. MORTON
 DEPUTY REGISTER OF DEEDS
 PG: 968-968

LEGEND:
 SPK SET SURVEYOR P.K. NAIL
 CP CALCULATED POINT
 FIP FOUND IRON PIPE
 FR FOUND REBAR
 SR SET REBAR
 SCM SET CONCRETE MONUMENT
 FCM FOUND CONCRETE MONUMENT
 NTS NOT TO SCALE
 O/A OVERALL
 DB DEED/DOCUMENT BOOK
 PIN TAX PARCEL IDENTIFICATION NUMBER
 SET REBAR
 CALCULATED POINT
 RIGHT-OF-WAY
 HDPE HIGH DENSITY POLYETHYLENE PIPE
 CMP CORRUGATED METAL PIPE
 S.R. STATE ROAD
 WATER VALVE
 UTILITY POLE
 OVERHEAD UTILITY LINE
 DRAINAGE CULVERT



WITNESS MY ORIGINAL SIGNATURE, LICENSE NUMBER, AND SEAL THIS THE 20 DAY OF November, 2006
 Robert L. Hafler
 PROFESSIONAL LAND SURVEYOR
 L-2975

PREPARED BY
HAFLER LAND SURVEYING
 427 S. CALDWELL STREET
 BREWARD, NORTH CAROLINA 28712
 (828) 884-7168
 FAX (828) 884-8646

SURVEY & PLAT
MOUNTAIN BROOK
 Lots: 1-19; 36-44; 46-62
 CATHEYS CREEK TOWNSHIP
 TRANSPORTATION COUNTY, NORTH CAROLINA

DATE: **NOVEMBER 20, 2006**
 FIELD RECORDS
 DATA COLLECTOR
MhbRkPlatSh3.dwg
 COORDINATE FILE
Pn06038.crd
 PROJECT NUMBER
06038

Sheet 3 of 6
 DRAWING NUMBER
MhbRkPlatSh3.dwg
 PROJECT NUMBER
06038

THIS SHEET IS PART OF A SET AND THIS IS TO BE CONSIDERED INCOMPLETE WITHOUT ALL THE OTHER SHEETS IN THE SET TO SUPPORT IT.

SEE SITE MAP ON SHEET 1 FOR ADJOINERS